



The Nature  
Conservancy   
Protecting nature. Preserving life.™



# Engaging Professionals and Citizens in Early Detection/Rapid Response to Vertebrate Invasive Species

**Cheryl B. Millett, The Nature  
Conservancy**

**Liz Barraco, Jennifer Ketterlin  
Eckles, Jenny Novak, Ashley Taylor,  
Florida Fish and Wildlife  
Conservation Commission**

**Skip Snow, National Park Service**



# PYTHON HUNTER TESTS

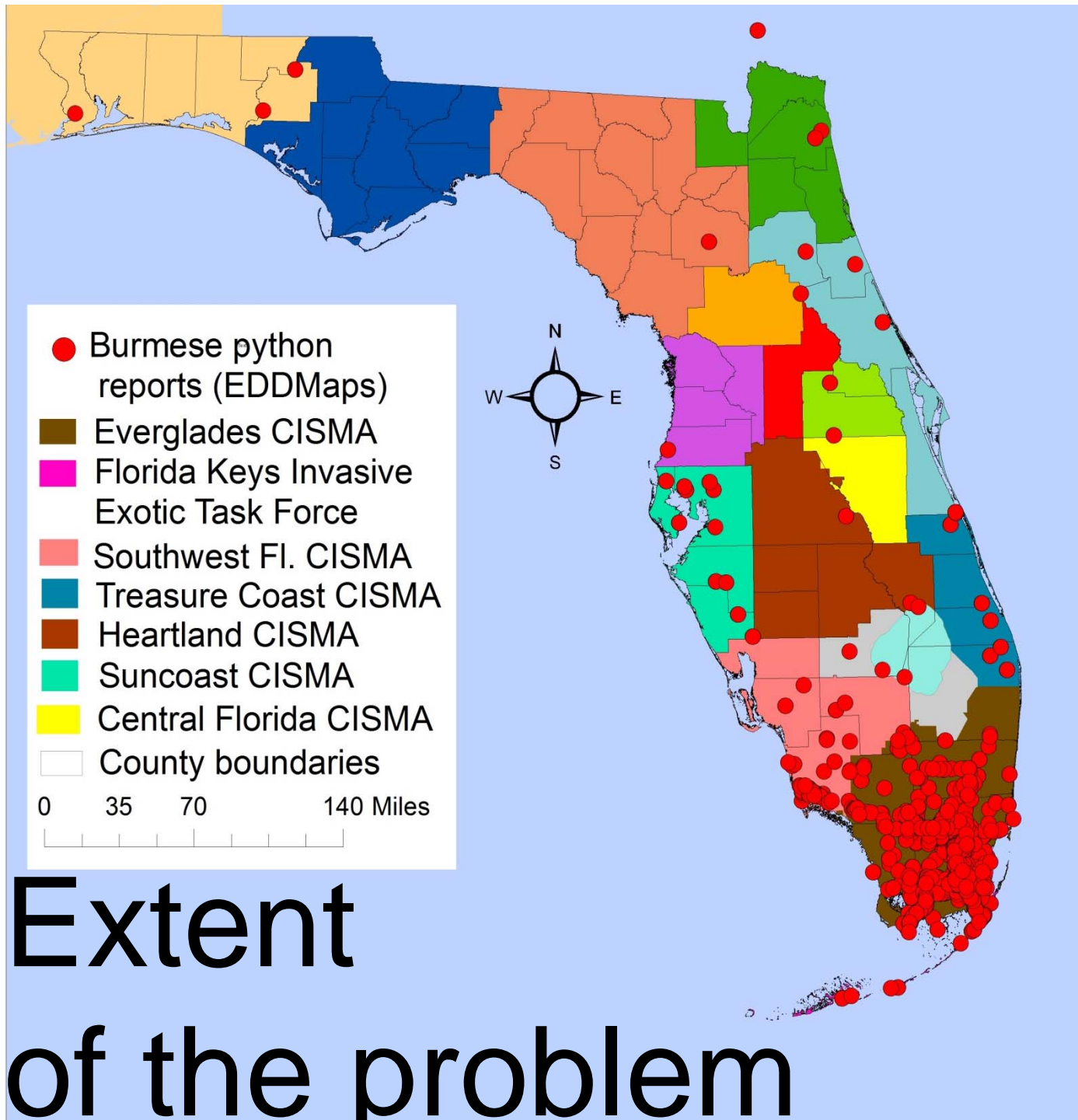


Photo: Edward Mercer

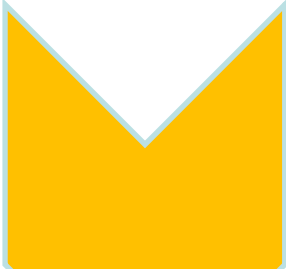



# Endangered Key Largo Woodrat found in Burmese python 2007






# Python Patrol

- 
- Someone sees a python
  - Calls 888-IVE-GOT-1

- 
- Call gets directed to live person
  - Live person calls local “catcher”

- 
- Local catcher heads out to reporter
  - Catcher catches snake and **SUCCESS!**

**How to  
increase  
detection?**





**The three elements of the program are:**

**1) training key audiences to be able to identify and report pythons**

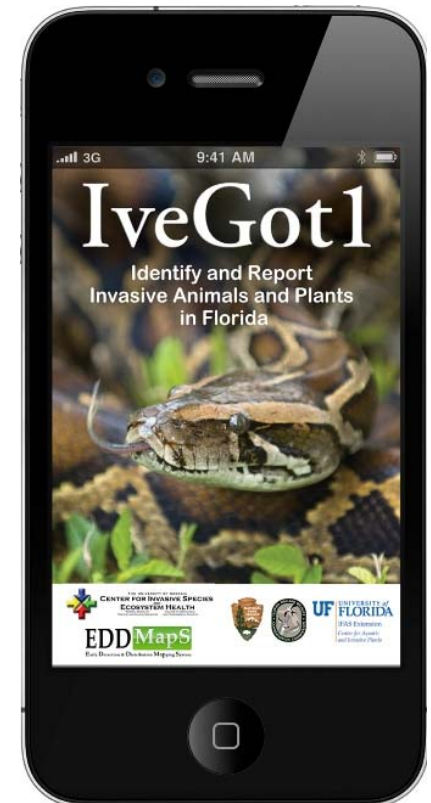
**REDDY**

**Introduced Reptile  
Early Detection  
& Documentation**



- Stay at a safe distance
- Take a photo
- Report it

**2) providing a quick and easy mode of reporting**



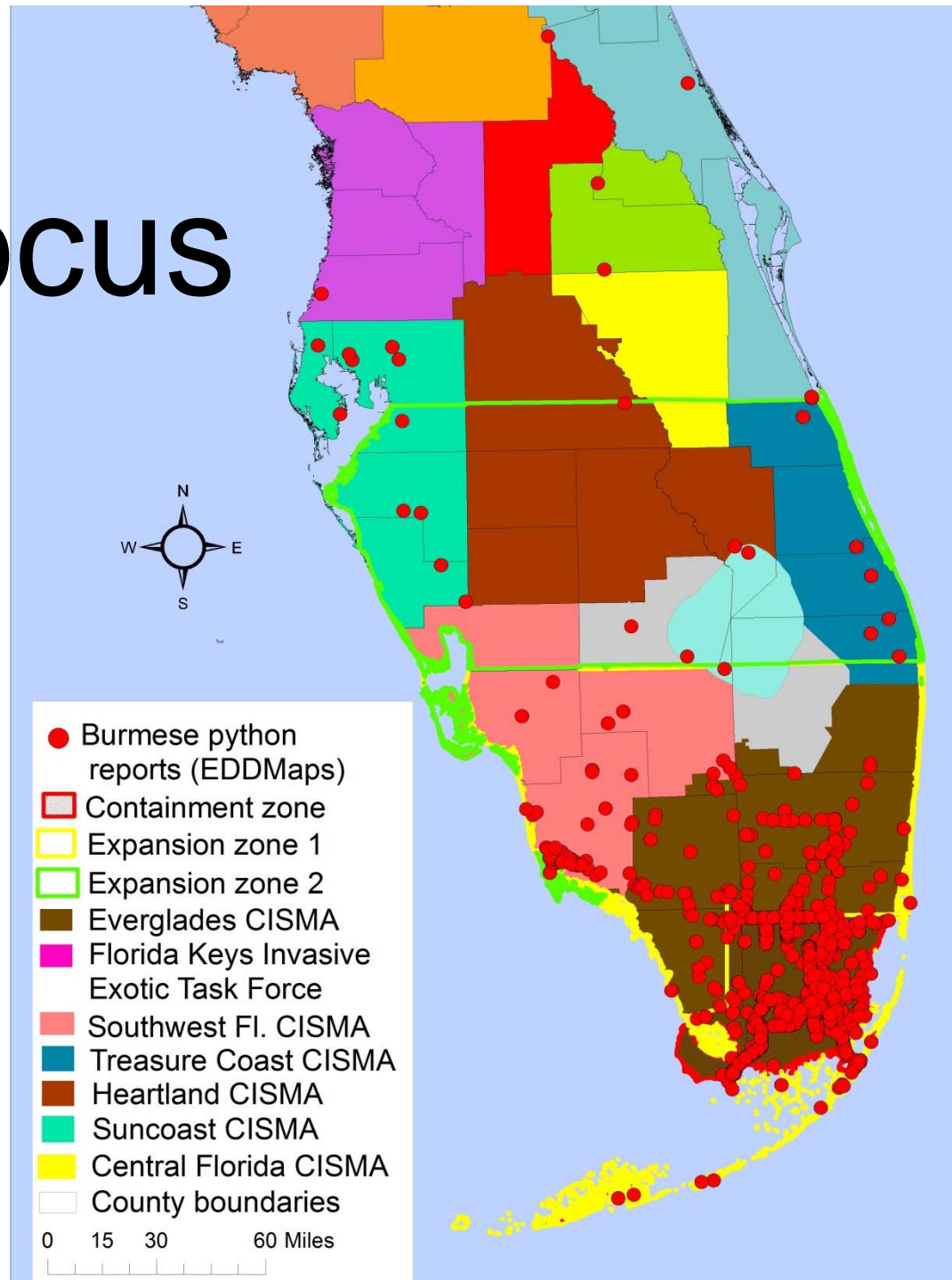
**[www.IveGot1.org](http://www.IveGot1.org)**



### 3) training conservation professionals to safely and humanely capture exotic constrictors.



# Focus



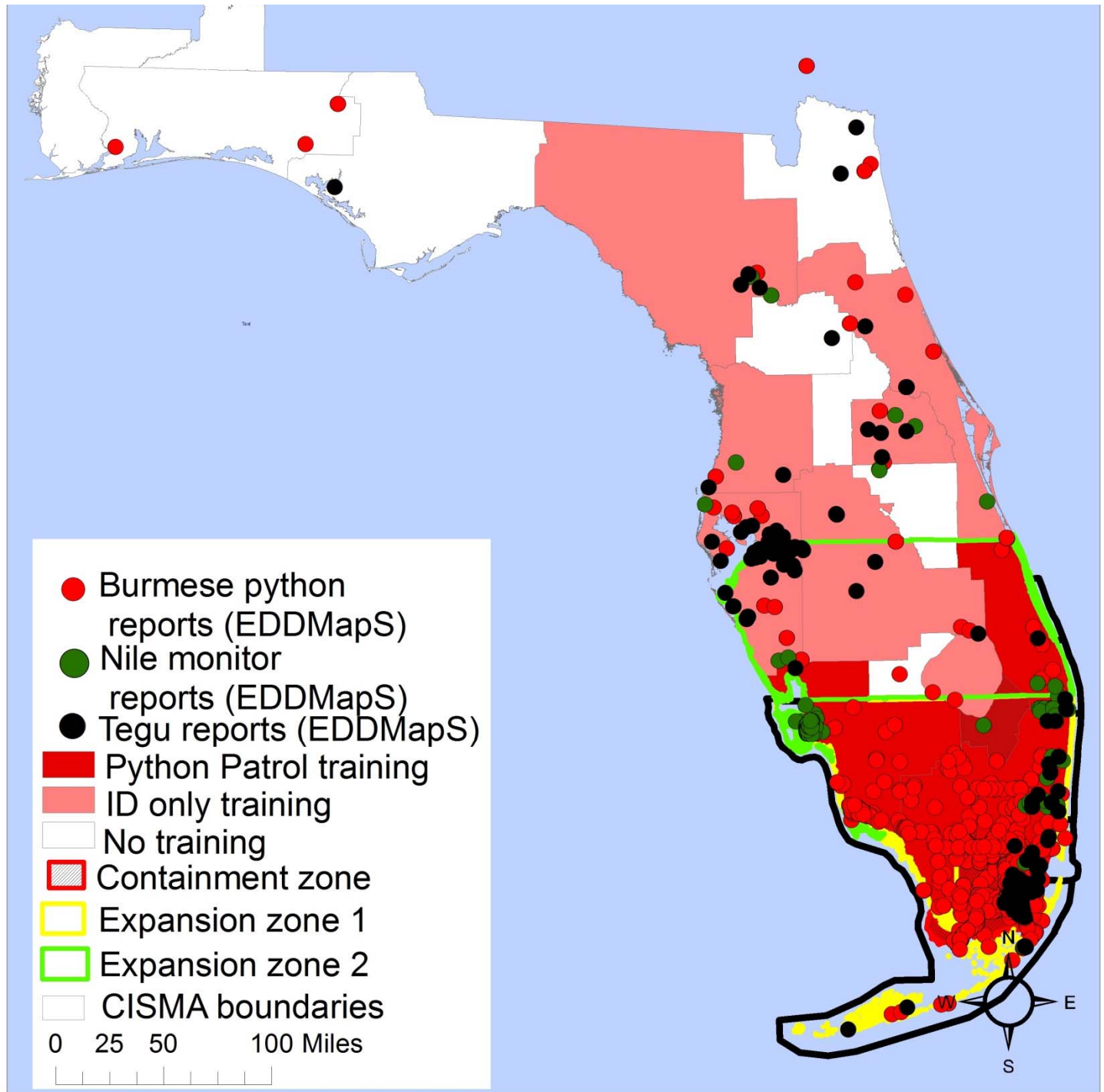


# Measures: increased detectors & responders

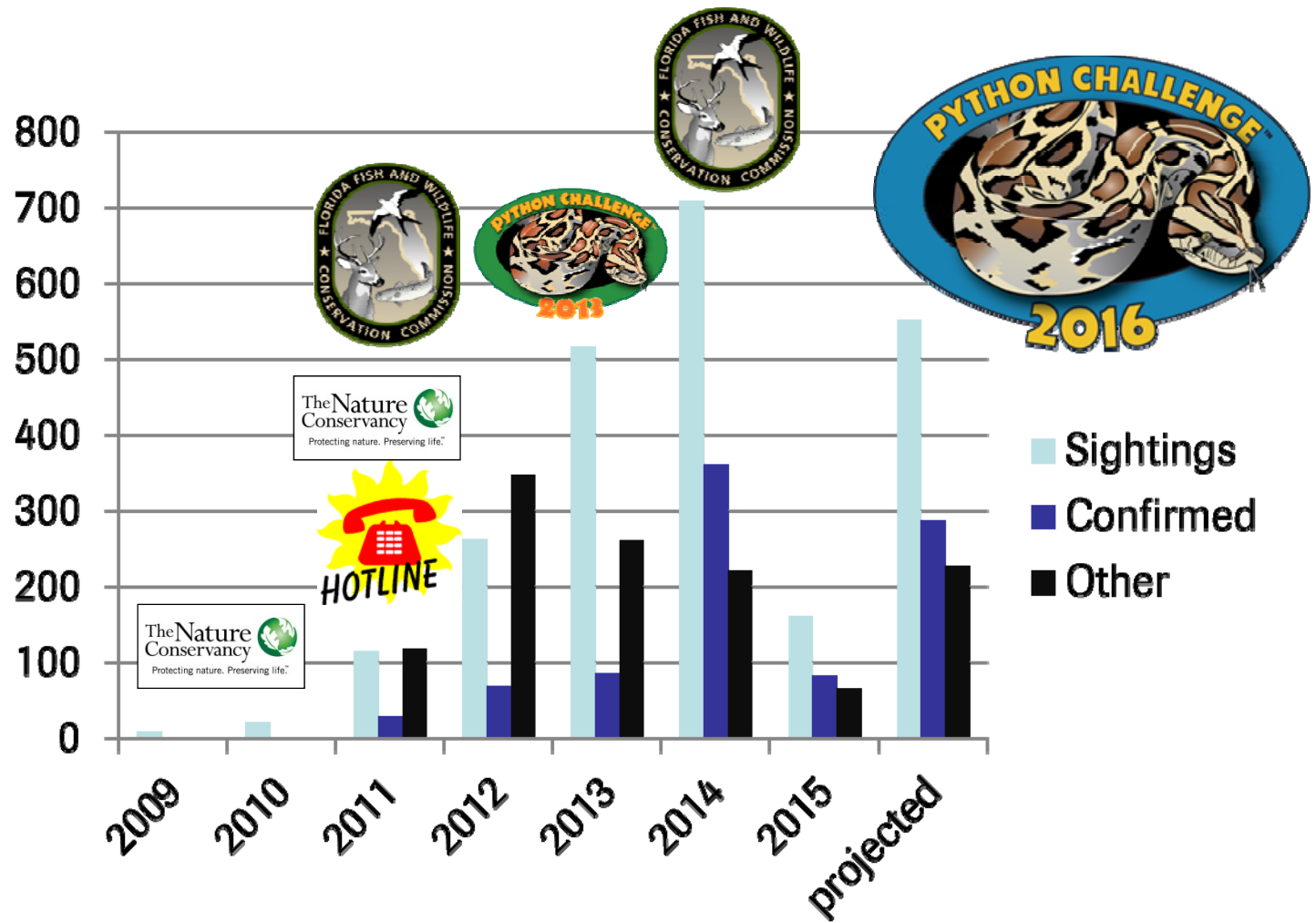
- >2,600 professionals and citizens have been trained to identify and report
- >450 trained in safe and humane capture





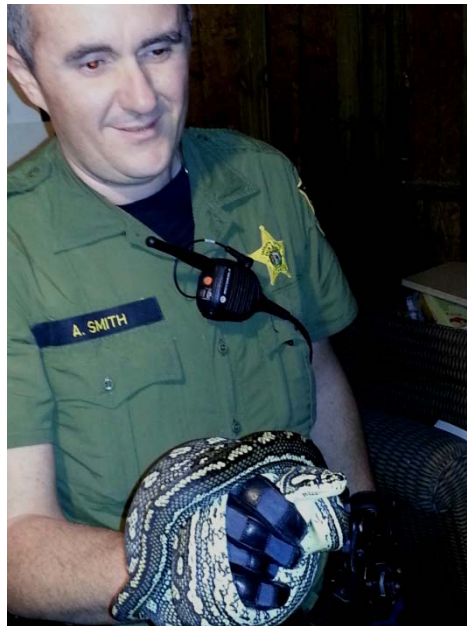


# Increased reporting



# Indirect measure of impact on pythons

- 87% of trainees responding to a survey (n=250) reported 143 captures
- FETA response





# Keys for successful engagement of professionals and citizens

- Start small, scale & adapt
- Strong partnership key
- Targeted trainings, safety primary
- Engaging public has other benefits
- Can't solve detectability, but is one tool
- Applicable to other species







The Nature Conservancy   
Protecting nature. Preserving life.™



# Prevention and risk assessments



**Amnesty Program**  
**Great pets. Great homes.**



# Questionssss?

Cheryl Millett  
cmillett@tnc.org

The Nature  
Conservancy



Protecting nature. Preserving life.™